

## Focusing Education on the Future!



# CAREER PATHWAY MANUFACTURING PRODUCTION PROCESS DEVELOPMENT

Dual or Tech/Career Seal

Workers in Manufacturing Production Process Development are responsible for product design and design of the manufacturing process. They work with customers to ensure that the manufacturing process produces a product that meets or exceeds customer expectations. They also monitor the manufacturing process and the materials used to manufacture the product.

### Major Courses

Students must take **THREE** pathway concentration courses and **ONE** additional pathway elective course.

#### Pathway Concentration Courses (3):

- Integrating Systems
- Intro to Manufacturing/Engineering Science
- Mechanical/Electrical Systems I

#### Pathway Elective Courses (1):

- Apprenticeship/Internship
- Drafting Technology: Introduction
- Foundations of Engineering and Technology (formerly Introduction to Technology)

### Other Recommended Courses

- Algebra I
- Informal Geometry
- Introduction to Engineering Drawing
- Peer Leadership
- Pre-Algebra
- Pre-Engineering Technology

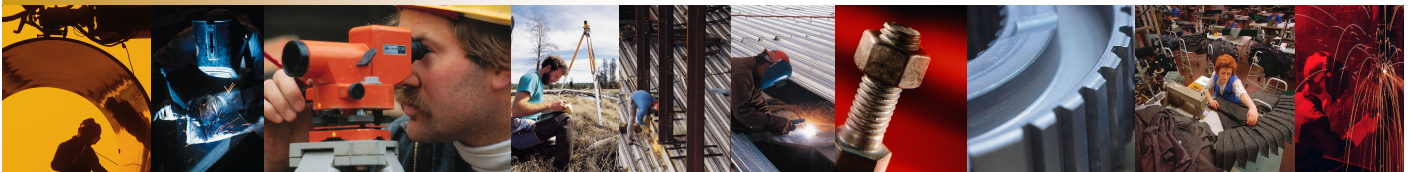
#### Post-Secondary Degrees, Diplomas & Certificates

##### Technical Colleges

- Electrical Control Systems
- Industrial Mechanical Tech
- Industrial Motor Control

##### Colleges/Universities

- Electrical Engineering
- Industrial Engineering



Design Engineer  
Electronics Engineer  
Manufacturing Engineer  
Production Manager  
Supervisor

Labor Relations Manager  
Engineering Technician  
Manufacturing Technician  
Purchasing Agent  
Electrical Technician

Power Generating and Reactor Plant Operator  
Industrial Engineer  
Precision Inspector, Tester, and Grader  
Process Improvement Technician  
Electronic Technician and Technologist

C  
A  
R  
E  
E  
R  
S

### EMPLOYMENT OUTLOOK

Employment in some of the occupations in this pathway are predicted to grow more slowly than the average because of increasing automation in the manufacturing sector. Electrical engineering positions will grow about as fast as the average.